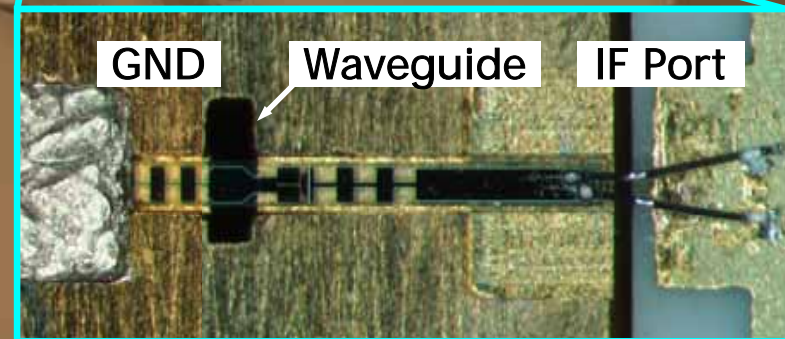
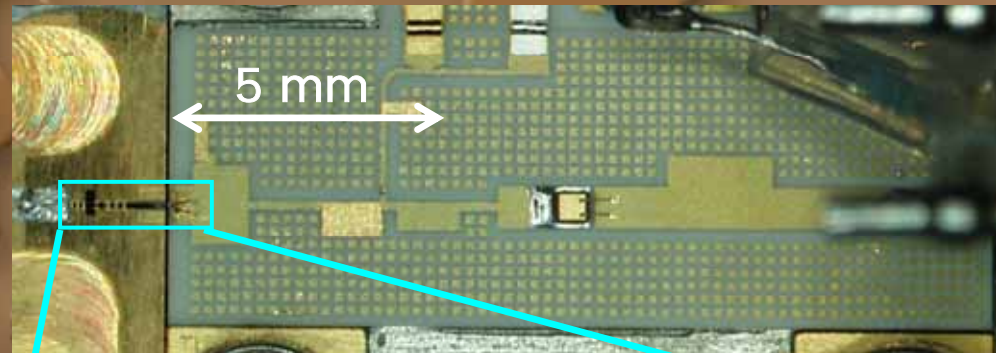


Overview of the SMX (1/2)

LO: 637.32 GHz, IF: 11-13 GHz

RF/LO Input: Corrugated Horn, IF Output: SMA Connector



Overview of the SMX (2/2)

SIS Junction: Nb/AlOx/Nb

Junction Area: $\sim 1 \times 1 \mu\text{m}^2$

Current Density: 6-7 kA/cm²

Fabricated at Nobeyama Radio Observatory, JAPAN

